

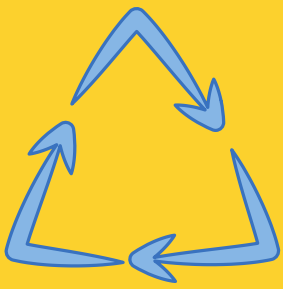
# INFOGRAPHIC INTRALOX

## The production of Intralox



### Oil

Oil will be pumped up from the ground with a pumpjack and then brought to the factory for use.



### Plastic

In the factory the oil will be transferred into modular plastic.



### Rubber Chemical

After they have the Modular Plastic they use a formula. The rubber Chemicals are bound to the surface..



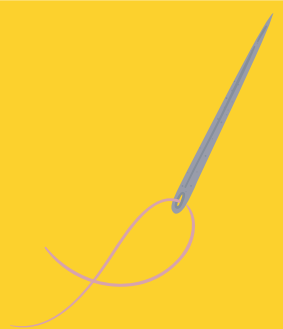
### Attachment

The two products have been attached to the fabricated methods.



### Hing pins

After that, you'll have hing pins, they need to be at least 8mm



### Stitching

They take the Hing pins and stitch it so far in the modular plastic.



### End

The product has been finished and is ready to be delivered to the customer.